

A sleek, light blue handheld medical device, the Penguin ENT Scope, is shown in a vertical orientation. The device has a long, thin, silver-colored shaft that ends in a small, glowing yellow light. The main body of the device is light blue and features four distinct controls: a camera icon, a sunburst icon, a small green dot, and a green power button. The device is positioned as if it is about to be used on a human ear, which is shown in a semi-transparent, glowing white state in the upper left corner. The background is plain white.

Penguin ENT Scope

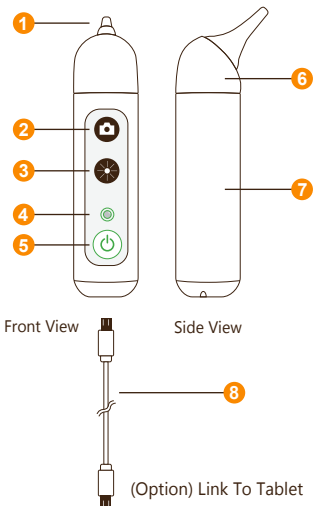


Quick Guide Manual

OPCOM® Care[®]

OPCOM Penguin

A personal health scope to check yours and your loved ones ears, nose, eyes, skin and, hair. With its built-in mini 310K Pixels camera in the 3.6mm head, pictures and videos can be captured for real-time viewing, or video that can be stored in your personal files and forwarded to a medical professional for review and diagnosis. Easy to use on small children and infants or pets....







- 1. EndoCam Camera** 310K Pixels camera.


- 2. Snapshot button**
 - Press button to take a snapshot.
 - Hold button down for 1-2 seconds to start video recording.

- 3. Brightness button**
 - Light intensity of 10 segments
 - When you reach the brightest, the lights flash
 - Go back from 9 to 0 after the brightness cycle

- 4. LED Indicator**
 - Non-connection with USB cable**
 - Power on :Blinking 45sec. to access into Wi-Fi Mode
 - Sanpshot :Blink once
 - Recording :Blinking continually
 - Stop recording :Stop blinking & back to  on

 - Low Battery: Blinking continually and need recharge immediately
 - EndoCam Camera Head disconnection: Blinks for 5 sec. then powers off automatically (After camera head connection is normal, press the power button and restart again)

- Connection with USB cable**
 -  Fully Charge (keep charging 1-2 hrs.)

 -  Charging

- 5. Power ON/OFF Button** Press 3 second to power ON / OFF.

- 6. EndoCam Camera Head** Camera and LED light module.

- 7. Battery** Location where rechargeable battery is placed into the unit.

- 8. USB Cable** Micro USB port at the bottom of the unit.

- 9. Charge** Support operating time up to 2.5 hours per each full charge.



Operation

1. Download App

To download mobile application to your Mobile device:

- Android: Go to Google play download "OPCOM Care" App.
- iOS: Go to App store download "OPCOM Care" App.

2. Paring Device to Mobile Device :

Power on OPCOM Care unit, and then turn on Wi-Fi on your mobile device.

- Open App, to Menu
- Wi-Fi Pairing, connect to Penguin_xxxxxx from the Wi-Fi list.

(Option) USB On TO Go (OTG) mode:

1. Turn off the power
2. Plug micro USB at the bottom of OPCOM Care Unit and plug another head of micro USB into tablet.



3. Live View :

After Wi-Fi connected to OPCOM Care unit, back to Home screen, and live-view display on your Mobile or OPCOM Care System Tablet.

4. P-CAM mode :

OPCOM Care unit in power-off state, connect device's micro-USB to PC USB port, then open PC AP which support UVC, the live-view screen will display on PC. You could also download OPCOM AP from OPCOM website.

5. Remark :

Mobile / Application User's Manual available at: www.opcom.com



For detailed warranty information, Please visit

www.opcom.com

